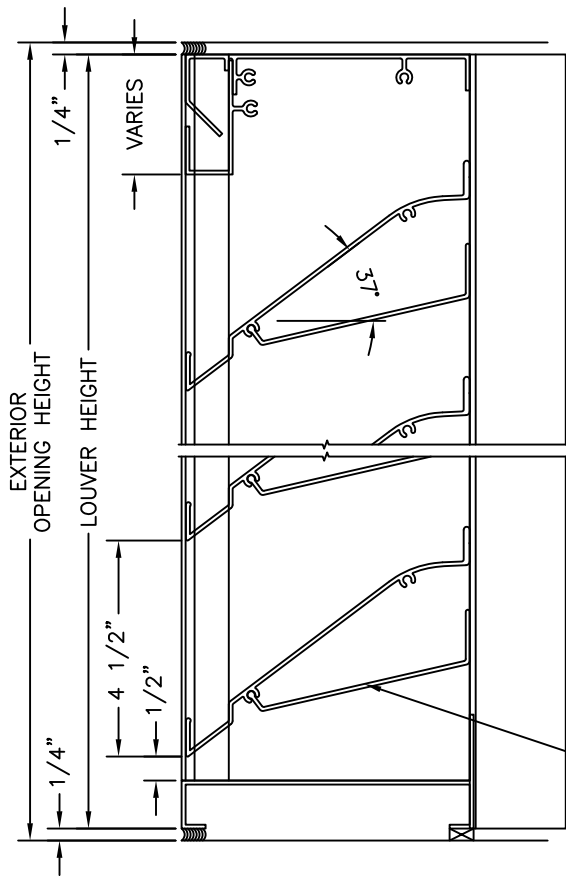


The illustrated design was created to a design load of 30 lbs. per square foot. Changes may be required to accommodate other design loads.

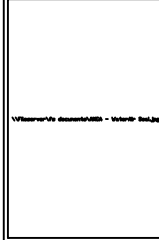
This drawing and the design represented are the confidential and proprietary property of ATOMS AP, LLC and may not be disclosed, loaned, copied or used for any purpose other than design review and approval without the express written consent of ATOMS AP, LLC. ATOMS AP, LLC reserves the right to alter the illustrated design solely at its' discretion.



PERFORMANCE DATA

The data below supersedes all previously published data.

VARIABLE	VALUE	DESCRIPTION
Measured Free Area	9.63 ft ² 48"x48"	
	0.89 m ² 122cmx122cm	
Free Area %	60.19 %	Measured Free Area/16ft ²
Air Velocity	974.70 fpm @ Beginning Point Of H ² O Penetration	
	297.09 mpm	
Volumetric Air Flow	9,386.36 cfm @ 0.01 oz./ft ² Free Area	
	4.43 cms	
Pressure Drop	0.11 in. of H ² O @ 0.01 oz./ft ² Free Area	
	27.37 pascals	
Air Velocity	1,050.00 fpm @ Pressure Drop Of: 0.15" H ² O	
	320.04 mpm	37 pascals
Volumetric Air Flow	10,111.50 cfm @ Pressure Drop Of: 0.15" H ² O	
	4.77 cms	



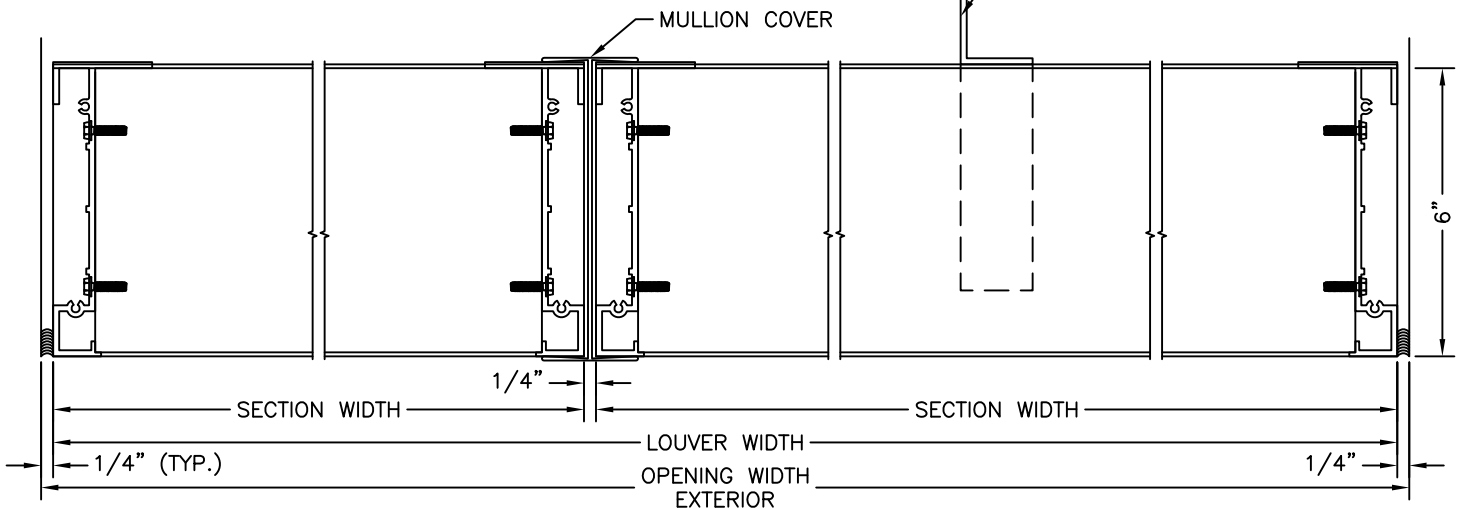
ATOMS AP LLC certifies that louver model APED-637 shown herein is licensed to bear the AMCA seal. The ratings shown are based on tests and procedures performed in accordance with AMCA publication 511 and comply with the requirements of the AMCA certified ratings program.

The AMCA Certified Ratings Seal Applies to Water Penetration and Air Performance.

MADE IN THE U.S.A.

STIFFENER AND BLADE BRACES USED WHEN BLADES ARE MORE THAN 60" IN LENGTH

STIFFENER AND BLADE BRACES USED WHEN BLADES ARE MORE THAN 60" IN LENGTH



FILE: C:\DRAFTING\CUTSHEETS\637-APED

MATERIAL: FRAME 0.125" (3.175mm) 6063-T5 EXTRUDED ALUMINUM
BLADE 0.081" (2.057mm) 6063-T5 EXTRUDED ALUMINUM

REV. DATE: 10/1/11

REV. BY: DR

PROJECT:

LOCATION:

ARCHITECT:

CUSTOMER:

CUSTOMER P.O. NO.:

A.A.P. ORDER NO.:

SCALE: 3"=1'

DATE: OCTOBER 1, 2011

DWN. BY: DR

APP'VD BY:

APED-637

SECTION SIZE LIMITS	MAXIMUM	MINIMUM	ONE DIMENSION MUST BE 60" OR LESS.
	WIDTH: 120"	WIDTH: 12"	
	HEIGHT: 120"		



510 EAST STREET
PARKERSBURG, WV 26101

www.atomsapllc.com

Phone: 304-865-0842

Fax: 304-865-0846