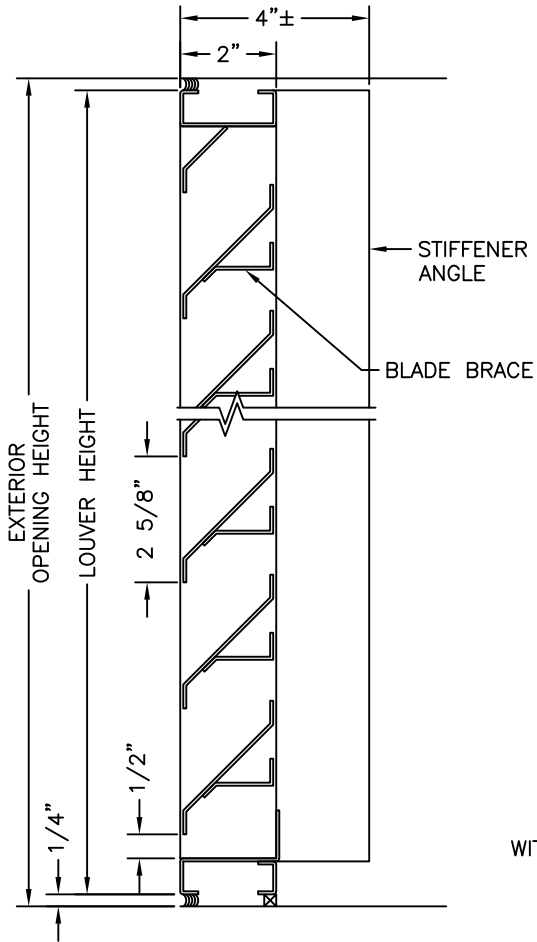


The illustrated design was created to a design load of 30 lbs. per square foot. Changes may be required to accommodate other design loads.

This drawing and the design represented are the confidential and proprietary property of ATOMS AP, LLC and may not be disclosed, loaned, copied or used for any purpose other than design review and approval without the express written consent of ATOMS AP, LLC. ATOMS AP, LLC reserves the right to alter the illustrated design solely at its' discretion.



### PERFORMANCE DATA

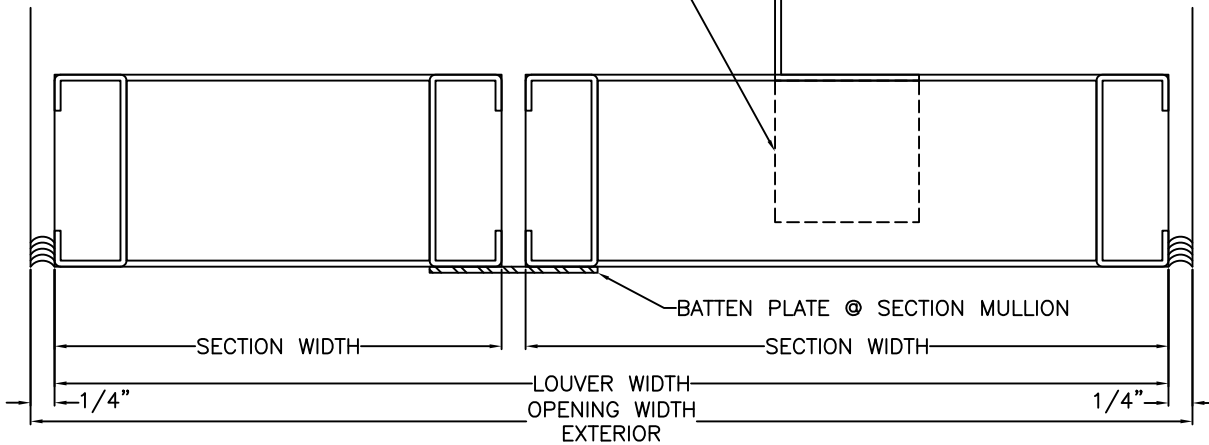
The data below supersedes all previously published data.

VARIABLE	VALUE	DESCRIPTION
Measured Free Area	8.09 ft <sup>2</sup> 0.75 m <sup>2</sup>	48"x48" 122cmx122cm
Free Area %	50.55 %	Measured Free Area/16ft <sup>2</sup>
Air Velocity	583.00 fpm @ Beginning Point Of H <sub>2</sub> O Penetration 177.70 mpm	
Volumetric Air Flow	4,714.95 cfm @ 0.01 oz./ft. <sup>2</sup> Free Area 2.23 cms	
Pressure Drop	0.06 In. of H <sub>2</sub> O @ 0.01 oz./ft. <sup>2</sup> Free Area 14.93 pascals	
Air Velocity	fpm @ Pressure Drop Of: 0.15" H <sub>2</sub> O mpm 37 pascals	
Volumetric Air Flow	cfm @ Pressure Drop Of: 0.15" H <sub>2</sub> O cms	

ATOMS AP certifies that the performance ratings shown were developed in accordance with the requirements of AMCA test method 500-L-99, paragraph 8.3.1.

**MADE IN THE U.S.A.**

BLADE BRACE & STIFFENER ANGLE USED ON UNITS WITH BLADES LONGER THAN 60"



FILE: C:\DRAFTING\CUTSHEETS\245-APEJ

MATERIAL: FRAME 0.0635" (1.613mm) GALVANIZED SHEET STEEL  
BLADE 0.0635" (1.613mm) GALVANIZED SHEET STEEL

REV. DATE: 7/26/11

REV. BY: DR

PROJECT:

LOCATION:

ARCHITECT:

CUSTOMER:

CUSTOMER P.O. NO.:

A.A.P. ORDER NO.:

SCALE: NTS

DATE: 12/14/10

DWN. BY: DR

APP'VD BY:

**APFJ-245**

SECTION SIZE LIMITS	MAXIMUM	MINIMUM	ONE DIMENSION
WIDTH:	120"	12"	MUST BE 60"
HEIGHT:	120"	12"	OR LESS.



510 EAST STREET  
PARKERSBURG, WV 26101

www.atomsapllc.com

Phone: 304-865-0842

Fax: 304-865-0846